

Key Knowledge:

Where is Egypt?

Egypt is a country situated in the north-eastern corner of Africa. It **borders** Libya, The Gaza Strip, Israel and Sudan. It has **coastlines** on the **Mediterranean Sea** and the Red Sea.

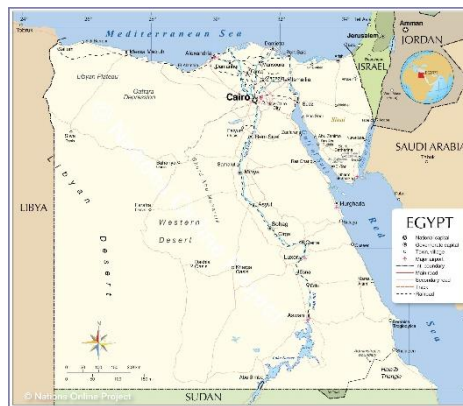
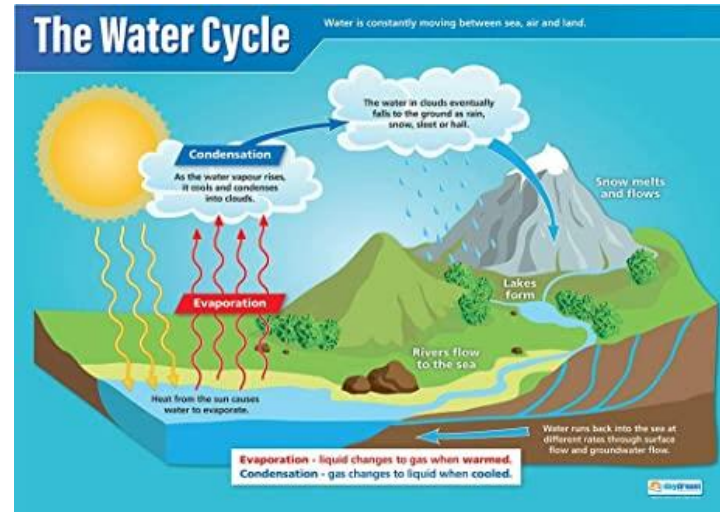
Capital City – Cairo, Main **language** – Arabic, **Currency** – Egyptian Pound, Main religion – Islam and Christianity

Egypt's Geographical Features

Egypt is mostly covered by desert. Not many people live in these regions. **The River Nile** is the longest river in the world (6650km) and travels through **Egypt**. The river splits into two main sections, The Nile **Delta**, and flows into the **Mediterranean Sea**. **Egypt** has a warm and dry **climate**. **Temperatures** in the daytime can reach 42° but the night is cool.



Diagrams or Maps.



Key Vocabulary:

Egypt	A country in Africa
Temperature	The amount of heat that is present.
Border	A line separating two countries.
Climate	The weather condition in an area over a long time.
Coastline	The land along a coast.
Currency	A money system used in a country.
Language	A method of human communication
The River Nile	The longest river in the world, running through Egypt to the Mediterranean Sea.
Delta	An area of wetland formed by a river splitting as it flows to the sea.
Mediterranean Sea	A sea north of Africa and south of Europe.

Curriculum links:

Maths – analysis of temperature, climate data.

Science – The Water Cycle.

English – Tourist brochure/country factfile.

Geographical Skills and Fieldwork

Children can use atlases, digital mapping, globes to locate Egypt and Africa.

Children can use compass points to locate the cities, towns and to plot the direction of the River Nile.

Children can collate and analyse population and climate data.